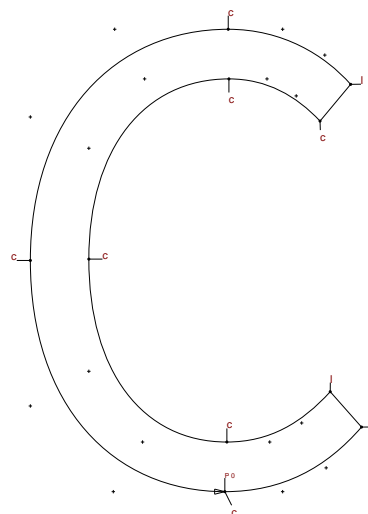
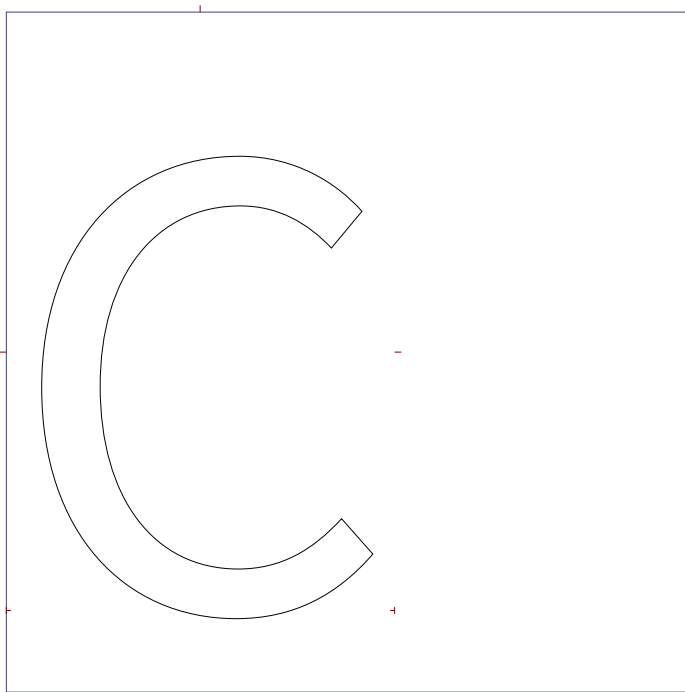


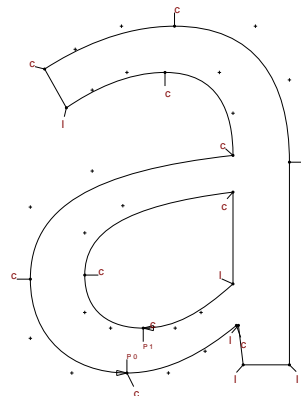
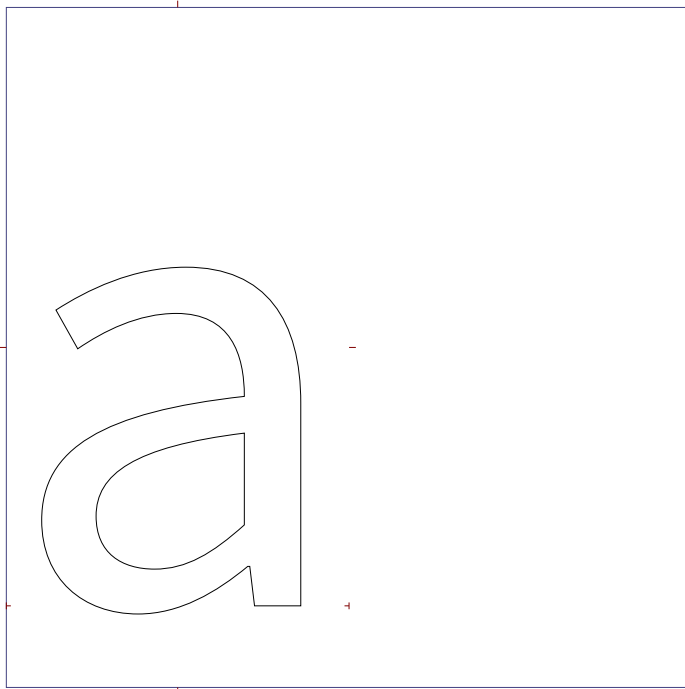
B

B
 min = 90, 0 max = 548, 656
 L = 90, R = 40 Width = 588
 T = 104, B = 120, vAdv = 1000
 Parts: m = 3, l = 7, c = 8, total = 18
 Paths: 3
 Hints: 6 horiz: 3, vert: 3



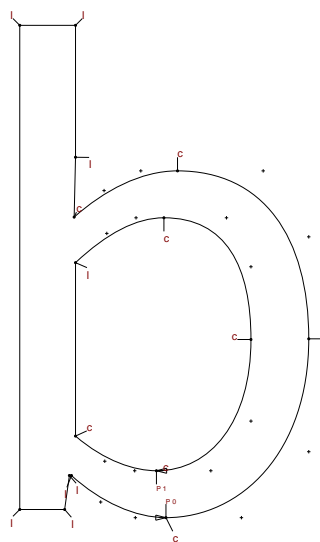
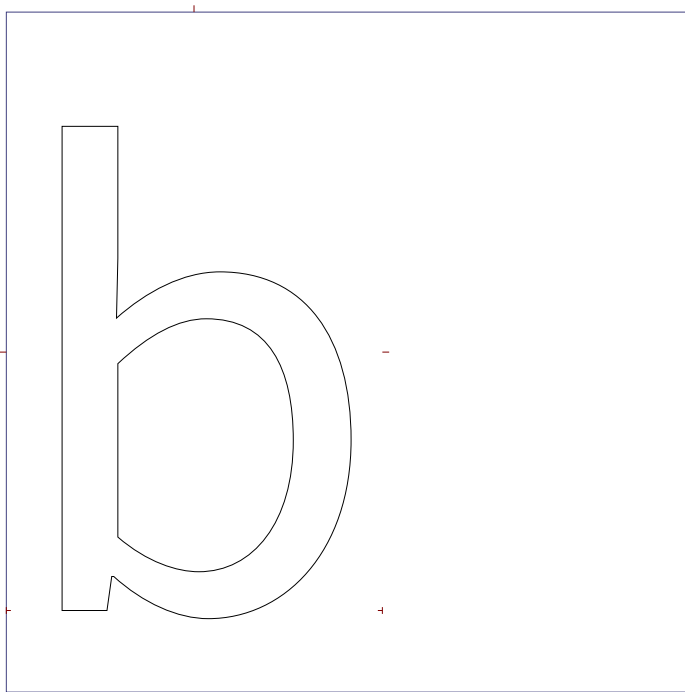
C

C
 min = 52, -12 max = 539, 668
 L = 52, R = 32 Width = 571
 T = 92, B = 108, vAdv = 1000
 Parts: m = 1, l = 2, c = 8, total = 11
 Paths: 1
 Hints: 3 horiz: 2, vert: 1



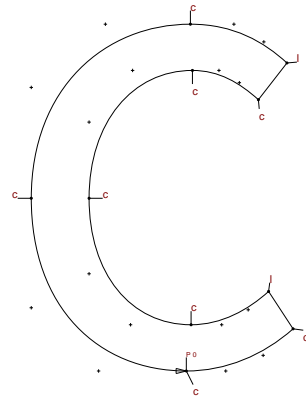
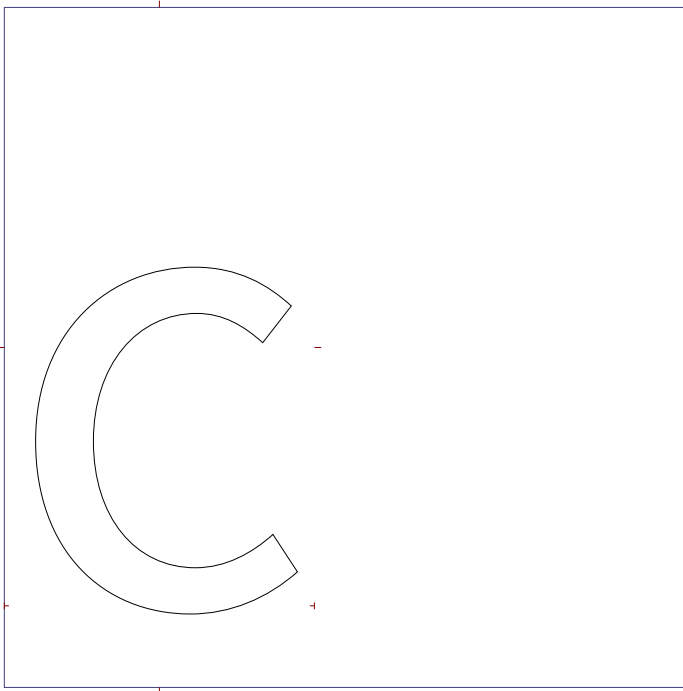
a

a
min = 52, -12 max = 433, 498
L = 52, R = 71 Width = 504
T = 262, B = 108, vAdv = 1000
Parts: m = 2, l = 6, c = 10, total = 18
Paths: 2
Hints: 5 horiz: 3, vert: 2



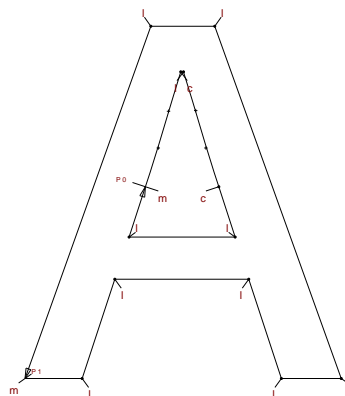
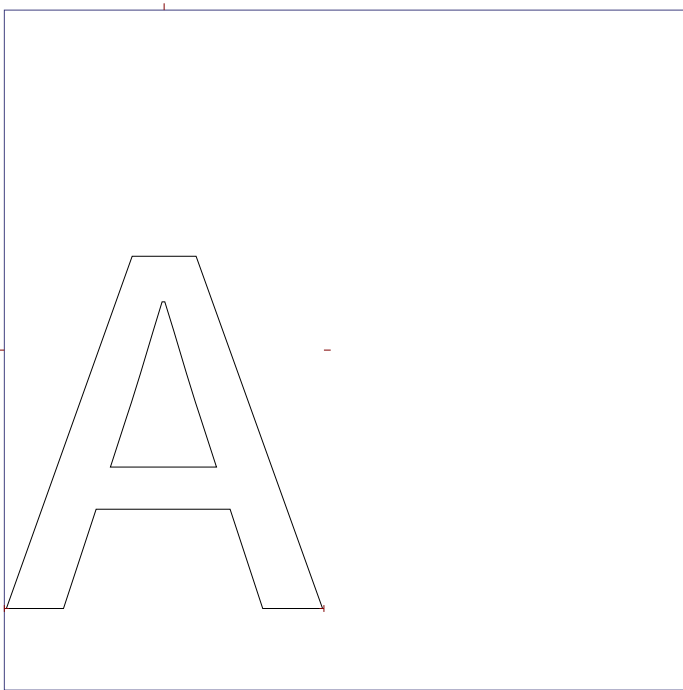
b

b
min = 82, -12 max = 507, 712
L = 82, R = 46 Width = 553
T = 48, B = 108, vAdv = 1000
Parts: m = 2, l = 8, c = 8, total = 18
Paths: 2
Hints: 6 horiz: 4, vert: 2



C

C
min = 46, -12 max = 431, 498
L = 46, R = 25 Width = 456
T = 262, B = 108, vAdv = 1000
Parts: m = 1, l = 2, c = 8, total = 11
Paths: 1
Hints: 3 horiz: 2, vert: 1



A

A.sc
min = 3, 0 max = 468, 518
L = 3, R = 2 Width = 470
T = 242, B = 120, vAdv = 1000
Parts: m = 2, l = 10, c = 2, total = 14
Paths: 2
Hints: 4 horiz: 3, vert: 1